



## FACILITIES PROVIDED FOR DISABLED AND ELDERLY PERSONS

Following Facilities are provided at college for disabled and elderly persons to maintain barrier free built environment-

1. Lift access provided at each floor level.



2. Easy and protected access to lift at ground floor from entrance of college building.



### 3. Wheel Chair



### 4. European WC (Commode) in toilet at each floor with supportive bars and mirrors in toilet



5. Handrail for stairs



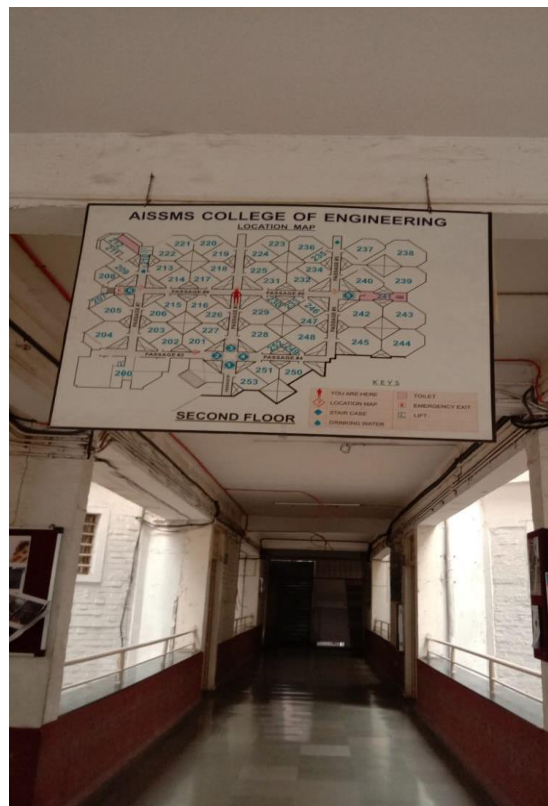
6. Railing in passages



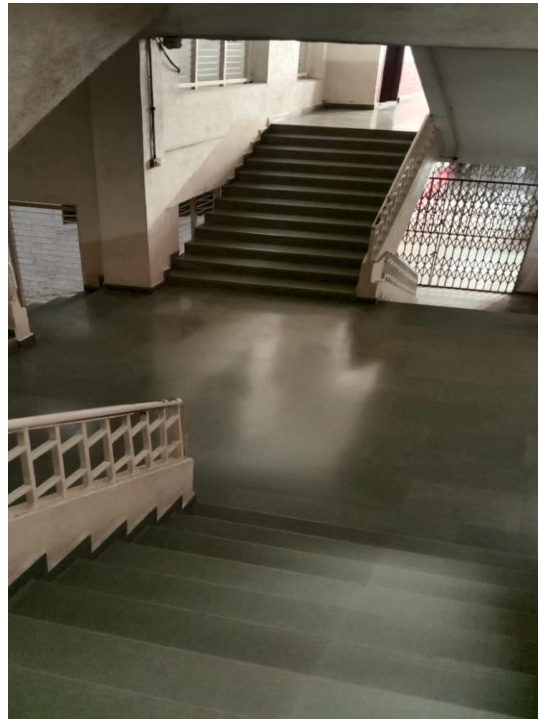
7. Separate rest room for ladies and gents



8. Layout maps are provided at each floor



9. Properly designed staircases



10. Easily accessible entrance



11. Sufficient wide doors at each room access for easy movement of wheel chair etc.

